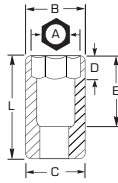




## 3/4" DRIVE DEEP IMPACT SOCKETS

- ▶ Proto® 6 Point Impact Sockets are ideal for use on stubborn or damaged fasteners, and also on fasteners made from soft materials.
- ▶ Stamped size for easy reference.
- ▶ Side locking hole.



- ▶ Radius-corner socket design
- ▶ Engages flats for better grip
- ▶ Improves the ability to turn worn or rounded fasteners

3/4" DRIVE IMPACT SOCKETS

INCH	6	Nut End Outside Diameter (in) (B)	Drive End Outside Diameter (in) (C)	Nut Depth (in) (D)	Bolt Clearance Depth (in) (E)	Overall Length (in) (L)	Weight (lbs)	Crush Retaining Ring	O-Ring	Retaining Pin
9/16	J07509L	1	1-5/8	15/32	2-5/16	3-1/4	1.34	JRR07523	J07500R	J07500P
5/8	J07510L	1-3/32	1-5/8	33/64	2-5/16	3-1/4	1.28	JRR07523	J07500R	J07500P
11/16	J07511L	1-5/32	1-5/8	9/16	2-5/16	3-1/4	1.34	JRR07523	J07500R	J07500P
3/4	J07512L	1-1/4	1-5/8	39/64	2-5/16	3-1/4	1.35	JRR07523	J07500R	J07500P
13/16	J07513L	1-5/16	1-5/8	43/64	2-5/16	3-1/4	1.18	JRR07523	J07500R	J07500P
7/8	J07514L	1-1/2	1-5/8	23/32	2-5/16	3-1/4	1.23	JRR07523	J07500R	J07500P
15/16	J07515L	1-5/8	1-5/8	25/32	2-5/16	3-1/4	1.20	JRR07523	J07500R	J07500P
1	J07516L	1-5/8	1-5/8	53/64	2-5/16	3-1/4	1.11	JRR07523	J07500R	J07500P
1-1/16	J07517L	1-5/8	1-5/8	7/8	2-5/16	3-1/4	1.20	JRR07523	J07500R	J07500P
1-1/8	J07518L	1-3/4	1-3/4	59/64	2-5/16	3-1/4	1.29	JRR07526	J07500R	J07500P
1-3/16	J07519L	1-7/8	1-3/4	31/32	2-5/16	3-1/4	1.54	JRR07526	J07500R	J07500P
1-1/4	J07520L	2	1-3/4	1	2-5/16	3-1/4	1.89	JRR07526	J07500R	J07500P
1-5/16	J07521L	2-1/8	1-3/4	1	2-5/16	3-1/4	1.88	JRR07526	J07500R	J07500P
1-3/8	J07522L	2-1/8	1-3/4	1	2-5/16	3-1/4	1.79	JRR07526	J07500R	J07500P
1-7/16	J07523L	2-1/4	1-3/4	1-1/16	2-7/16	3-1/2	2.00	JRR07526	J07500R	J07500P
1-1/2	J07524L	2-3/8	1-3/4	1-1/16	2-7/16	3-1/2	2.25	JRR07526	J07500R	J07500P
1-9/16	J07525L	2-3/8	1-3/4	1	2-3/8	3-13/16	2.43	JRR07526	J07500R	J07500P
1-5/8	J07526L	2-3/8	1-3/4	2-1/4	2-5/8	3-13/16	2.57	JRR07526	J07500R	J07500P
1-11/16	J07527L	2-39/64	1-3/4	2-1/4	2-5/8	3-7/8	2.69	JRR07526	J07500R	J07500P
1-3/4	J07528L	2-39/64	1-3/4	2-1/4	2-5/8	3-7/8	2.84	JRR07526	J07500R	J07500P
1-13/16	J07529L	2-3/4	1-3/4	2-1/4	2-5/8	3-7/8	3.09	JRR07526	J07500R	J07500P
1-7/8	J07530L	2-3/4	1-3/4	2-3/8	3-3/4	4-1/16	3.19	JRR07526	J07500R	J07500P
2	J07532L	3	1-3/4	1-1/2	2-3/4	4-1/16	3.45	JRR07526	J07500R	J07500P

ASME B107.2

MM	6	12	Nut End Outside Diameter (in) (B)	Drive End Outside Diameter (in) (C)	Nut Depth (in) (D)	Bolt Clearance Depth (in) (E)	Overall Length (in) (L)	Weight (lbs)	Crush Retaining Ring	O-Ring	Retaining Pin
19	J07519ML	J07519MLT	1-7/32	1-5/8	5/8	2-1/4	3-1/4	1.32	JRR07523	J07500R	J07500P
21	J07521ML	J07521MLT	1-3/8	1-5/8	51/64	2-1/4	3-1/4	1.30	JRR07523	J07500R	J07500P
22	J07522ML	J07522MLT	1-7/16	1-5/8	13/16	2-1/4	3-1/4	1.20	JRR07523	J07500R	J07500P
23	J07523ML	J07523MLT	1-5/8	1-5/8	3/4	2-1/4	3-1/4	1.28	JRR07523	J07500R	J07500P
24	J07524ML	J07524MLT	1-5/8	1-5/8	13/16	2-1/4	3-1/4	1.31	JRR07523	J07500R	J07500P
26	J07526ML	J07526MLT	1-5/8	1-5/8	27/32	2-1/4	3-1/4	1.20	JRR07523	J07500R	J07500P
27	J07527ML	J07527MLT	1-5/8	1-5/8	7/8	2-1/4	3-1/4	1.14	JRR07523	J07500R	J07500P
30	J07530ML	J07530MLT	1-7/8	1-3/4	31/32	2-9/32	3-1/4	1.45	JRR07526	J07500R	J07500P
32	J07532ML	J07532MLT	2	1-3/4	1	2-9/32	3-1/4	1.63	JRR07526	J07500R	J07500P
33	J07533ML	J07533MLT	2	1-3/4	1	2-9/32	3-1/4	1.55	JRR07526	J07500R	J07500P
35	J07535ML	J07535MLT	2-1/8	1-3/4	1	2-9/32	3-1/4	1.89	JRR07526	J07500R	J07500P
36	J07536ML	J07536MLT	2-1/4	1-3/4	1	2-9/32	3-1/4	1.91	JRR07526	J07500R	J07500P
38	J07538ML	J07538MLT	2-3/8	1-3/4	1-1/16	2-29/64	3-1/2	2.10	JRR07526	J07500R	J07500P
41	J07541ML	J07541MLT	2-1/2	1-3/4	1-1/16	2-29/64	3-1/2	2.36	JRR07526	J07500R	J07500P
43	J07543ML	J07543MLT	2-9/16	1-3/4	1-1/8	2-29/64	3-1/2	2.52	JRR07526	J07500R	J07500P

ASME B107.33M

4 4 POINT
6 6 POINT
8 8 POINT
12 12 POINT
SPL SPLINE
TORX TORX®
HEX HEX
BLACK OXIDE